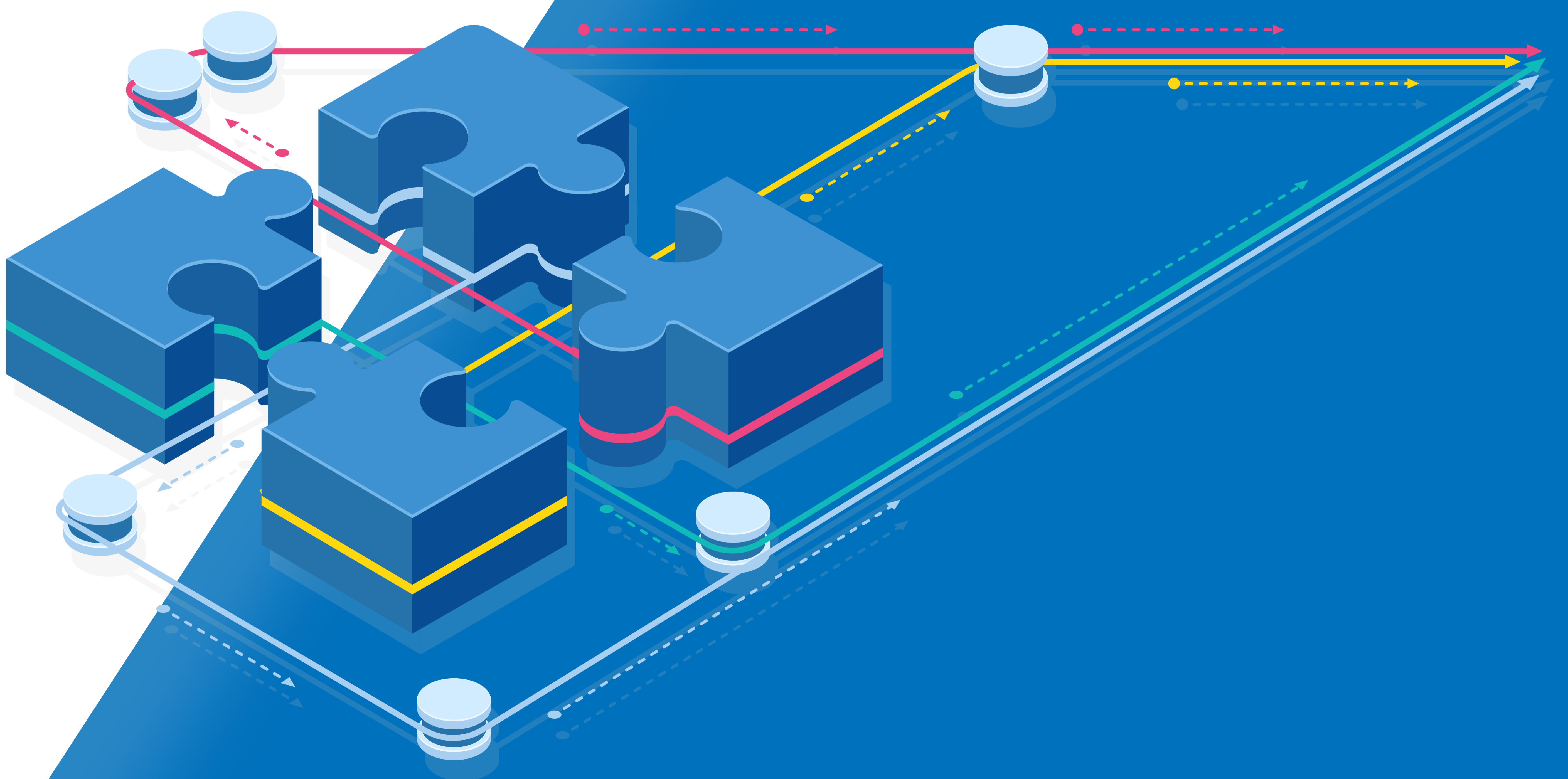


OPERATIONS AUTOMATION

with Skyline Automate



Problem

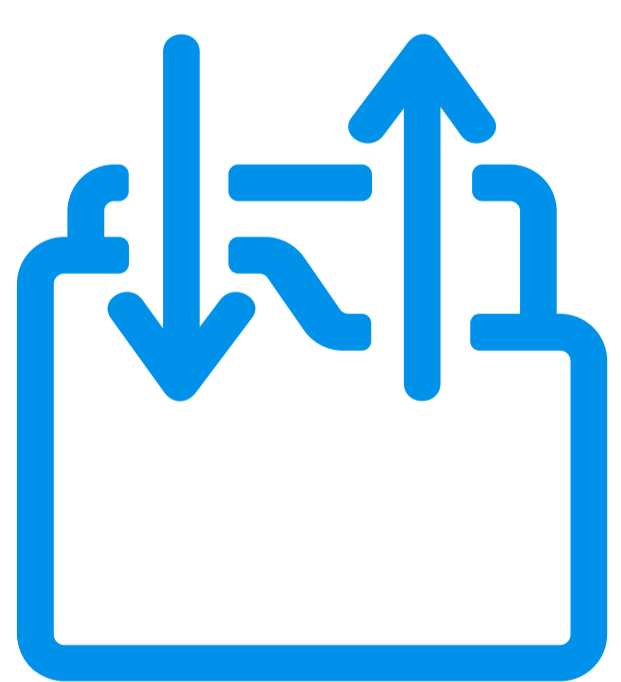
Legacy Data

Legacy technology and data management means that many organisations have **inflexible and outdated records** and **data streams**.

Legacy data may exist in old database technologies or spreadsheet, data streams may be configured for outmoded line printer outputs that require the retention old, troublesome output devices.

Solution overview

What Skyline Automate does



The data can be manipulated, 'forms' overlaid, and various output channels used to send the new data to an end user or loaded back into newer systems.



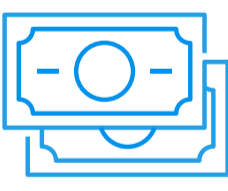
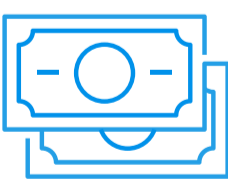
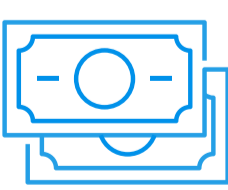
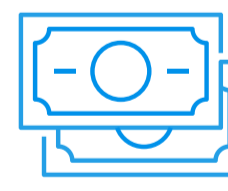
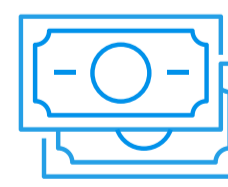
Multiple text based or formatted datafiles found in legacy systems or (CSV, XML, Access etc.) can be utilized and re-purposed.

| Highlights

Your key takeaways

- Utilize old data in new systems adding history or widen the scope of your digital assets
- Removes need for old equipment
- Data can be interrogated and used to feed/update other systems/applications
- Data taken directly from the old system
- Easy way to add branding/marketing to raw data

| Cost benefit

-  No modifications to existing systems
-  Removal of old equipment
-  Removal of business risk/exposure from legacy data
-  Allows you to apply GDPR rules
-  Increased options for up/crossselling with the data

| About Skyline Automate

Skyline Automate is a sophisticated scripting language that allows you to Automate parts of a business workflow (RPA) or replace an existing workflow process (DPA)

| Options

On site installation

Hosted Cloud

Run time library

SaaS

| Contact



01438 726 774



www.skylineflow.com



Sales@eprint.net